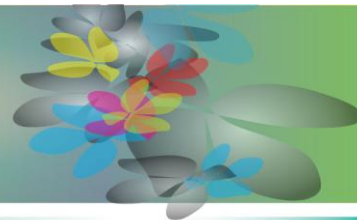


THE PACIFIC BASIN MUSIC FESTIVAL



E x p l o r e T h e W o r l d W i t h M u s i c

World Projects Corporation is proud to present

The 26th Annual **PACIFIC BASIN MUSIC FESTIVAL** *CHORAL Prospectus*

March 19 – March 26, 2011
(dates subject to change)

Dear Music Educators and Group Administrators:

Aloha and Mahalo to you for considering the PACIFIC BASIN MUSIC FESTIVAL as your music performance tour in 2011! This will be the 26th annual festival, which over the years has earned the reputation of being the finest educational music festival in the Pacific Islands.

The Pacific Basin Music Festival is an international event, bringing together the most talented junior high, high school, community, and college level bands and choirs from countries of the Pacific Basin and beyond. Festival activities include adjudicated and outdoor group performances, a full ensemble workshop and Festival Select Choir, a luau, a dinner dance, and a visit to the Arizona Memorial. With groups attending from countries such as Australia, Canada, Germany, Japan, New Zealand, Singapore, South Korea, Taiwan, Tonga, the United States, and the territory of Guam, this is a unique opportunity for international exchange through social functions and music. Students and directors will have access to outstanding international educators, conductors, and clinicians in a positive and meaningful environment. Past faculty has included Granville Oldham, Weston Noble, and George Torbay.

Thanks to the vision of Mr. Robert Lutt, a highly respected music educator in his own right, this innovative and much needed Festival became a reality in 1985. And today, it continues to foster the same spirit of cooperation and communication through music education, which was Mr. Lutt's goal 26 years ago.

The "Aloha Spirit" is alive and well in Hawaii, and we hope you will join us in 2011 as we continue this gathering of peace and understanding through the language of music. Please contact any of our offices worldwide if we can be of further assistance in making this journey a reality for *your* group!

Aloha,

Deborah Lee Gibbs
CEO
World Projects Corporation

Robert W. Lutt
Founder
Pacific Basin Music Festival



2011 Pacific Basin Music Festival Preliminary Schedule

(subject to change)

Note: A trip to Pearl Harbor is included and will be scheduled where convenient.

DAY ONE: SATURDAY, MARCH 19, 2011

- Morning / Afternoon Groups arrive into Honolulu and receive a traditional Hawaiian lei greeting! Transfer to your hotel in Waikiki. A World Projects staff member will meet you at the hotel and assist in check in. Enjoy some free time and lunch on own.
- Evening Dinner on own, or it may be arranged through World Projects. The group director and representatives will be invited to attend the Directors' Orientation Meeting followed by a Directors' Reception at the Pacific Beach Hotel.



DAY TWO: SUNDAY, MARCH 20, 2011 (B, D) – Select Choir Rehearsal / Outdoor Performances

- Morning Breakfast at the hotel or a local restaurant. Members of the Festival Select Choir will meet at the Pacific Beach Hotel for a rehearsal. Individual group rehearsals will also take place at the Pacific Beach Hotel.
- Afternoon The Ala Moana Concert Series begins this afternoon. Some groups will transfer to the Ala Moana Shopping Center (or similar) for an outdoor performance. Groups not scheduled to perform today will have free time to explore beautiful Waikiki.
- Evening Return to your hotel to dress for the evening. Attend the Festival Welcome Dinner Dance in the Pacific Beach Hotel Grand Ballroom! Throughout the evening, enjoy a plated dinner, as well as some live traditional Hawaiian music. This will be your opportunity to meet students from all over the Pacific Rim!



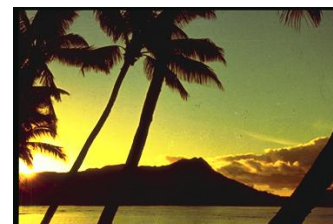
DAY THREE: MONDAY, MARCH 21, 2011 (B) – Adjudicated Performances

- Morning Breakfast at hotel or at a local restaurant. Meet in the hotel lobby in performance attire. Transfer to Central Union Church (subject to change) for your sound check. Following your sound check, you will have time for lunch on your own.
- Afternoon Return to Central Union Church (subject to change) for the Afternoon Adjudicated Choral Concert. Following the concert, return to your hotel.
- Evening Dinner on own, or it may be arranged through World Projects. Adjudicated performances will continue this evening at Central Union Church (subject to change).



DAY FOUR: TUESDAY, MARCH 22, 2011 (B) – Workshops / Outdoor Performances/ Select Choir Rehearsal

- Morning Breakfast at hotel or at a local restaurant. Enjoy a group workshop with Festival Faculty at the Pacific Beach Hotel either this morning or this afternoon.
- Afternoon Lunch on own. The Ala Moana Concert Series continues through this evening. Groups that did not previously perform here will do so today.
- Evening Dinner on own, or it may be arranged through World Projects. There will be a rehearsal for the Festival Select Choir at Pacific Beach Hotel this evening.



DAY FIVE: WEDNESDAY, MARCH 23, 2011 (B,L) – *Festival Luau / Select Choir Rehearsal / Command Performance Concert & Select Choir Performance*

Morning Breakfast at hotel or a local restaurant.

Late Morning Meet in the hotel lobby. Transfer to the Andrew’s Amphitheatre at the University of Hawaii (or similar) for the Festival Farewell Luau. Upon arrival, all groups will be assembled for the mass festival photograph. Enjoy a buffet lunch and fun activities (such as Polynesian dancers) during the luau. Following the luau, return to the hotel.

Afternoon Participants in the Festival Select Choir will meet in the lobby in concert attire. Load coaches and transfer to Hawaii Theatre for a dress rehearsal.

Evening Dinner on own. Assemble in the hotel lobby and load coaches. Transfer to the **Festival Command Performance Concert** at Hawaii Theatre. The Festival Select Choir will perform. Return to the hotel after the concert.

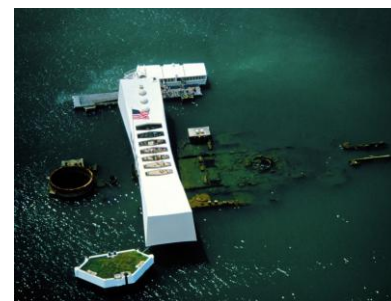


DAY SIX: THURSDAY, MARCH 24, 2011 (B)

Morning Breakfast at hotel or a local restaurant.

Morning / Afternoon Groups staying five nights will check out of the hotel and transfer to the airport. For those staying seven nights, the day is free to enjoy Honolulu and the island on own or to enjoy one of the optional excursions offered by World Projects (such as the Polynesian Cultural Center, Hawaiian Waters Adventure Park, Diamond Head, a dinner cruise along the Waikiki coastline, and whale watching).

Afternoon/Evening Free time to enjoy Honolulu. Lunch and dinner on own.



DAY SEVEN: FRIDAY, MARCH 25, 2011 (B)

Morning Breakfast at hotel or a local restaurant. The day is entirely free to enjoy Honolulu on own or to enjoy optional excursions.

Afternoon Lunch on own.

Evening Dinner on own. This is your last evening to enjoy the magic of Hawaii!



DAY EIGHT: SATURDAY, MARCH 26, 2011 (B)

Morning Breakfast at hotel or a local restaurant.

Morning / Afternoon Groups staying seven nights will be checking out today. Load coaches and transfer to Honolulu International Airport. Say goodbye to this island paradise!

Thank you for participating in the 2011 Pacific Basin Music Festival!



Organization

World Projects Corporation, located in Benicia, California, founded the PACIFIC BASIN MUSIC FESTIVAL in 1985. Mr. Robert Lutt, music educator and former Band Director at San Francisco State University, is Founder and Ms. Deborah Lee Gibbs is Chief Executive Officer.

World Projects Mission Statement

With music education as our priority, World Projects provides musicians with life changing performance opportunities and cultural exchange through travel.

Festival Facilities

The PACIFIC BASIN MUSIC FESTIVAL utilizes a number of facilities in Honolulu, including the Pacific Beach Hotel, Ala Moana Center Stage, and the Hawaii Theatre.

Festival Adjudicated Concerts

Each choir at the 2011 PACIFIC BASIN MUSIC FESTIVAL will be allowed a maximum of 20 minutes of performance time at the Festival Adjudicated Concerts. Our esteemed panel of adjudicators will critique your performance and offer written comments, which are given to the director at the conclusion of the concert. Each group must submit three copies of original scores for each piece of music being adjudicated.

Festival Awards

Based on the performance level as perceived by the adjudication panel, each group will receive a Gold, Silver, or Bronze award. There is no limit to the number of Gold, Silver, or Bronze awards. Each performing artist will receive a Certificate of Participation.

Command Performance

Following the adjudicated concerts, our faculty will select one instrumental group and one choir to perform at the Festival Command Performance Concert held in Hawaii Theatre the following evening. The ensembles selected for this honor best represent the spirit, enthusiasm, and camaraderie of the Festival.

Full Ensemble Workshops

Each ensemble will receive a one-hour coaching session from a guest conductor at PBMF, using a private rehearsal format. Generally, this session will use the group's festival music during the workshop. Directors will have ample opportunity to discuss the content of these sessions with the clinician prior to the workshop.

Festival Select Choir

A Festival Select Choir will be created from a select number of vocalists from each participating group. The selection of the choir members will be at the discretion of the directors. This is a wonderfully unique experience, giving this group of musicians the opportunity to sing with an ensemble of their peers under the direction of highly respected choral conductors and clinicians. Each director will receive music for the select choir by January 15, 2011. This group will have three rehearsals and will perform at the Command Performance Concert at Hawaii Theatre on March 23, 2011.

Ala Moana Concert Series

Every group participating in PBMF will have the opportunity to perform at Ala Moana Shopping Center's "Center Stage". This outdoor concert is informal, allowing ensembles to perform "lighter" music if desired. Each choir will be given a maximum performance time of 45 minutes for this concert.

Limited Participation

In order to ensure a quality experience, the festival is generally limited to a maximum of ten (10) participating choral groups. Groups that are denied entry based on available festival capacity will be given first priority in the following year (unless an organization is denied based on its music submission). Once accepted, space for a group can only be guaranteed upon receipt of the non-refundable deposit (see *Payment and Cancellation Schedule*).

Jazz Choirs

Although jazz choirs cannot be scheduled for adjudicated festival performances, these students are welcome to accompany the group and participate in all other educational and cultural activities during Festival Week. On a case-by-case basis, these adjunct groups may have the opportunity to perform at Ala Moana Center Stage (or similar).

Length of Stay

To ensure that students receive maximum educational benefit from the festival, all participating groups are asked to arrive in Honolulu in time for the Festival Orientation (Day One) and remain until at least Day 5. Extra days in Honolulu can be arranged for your group either before or after the 7 day Festival Package.

Social Events — Students / All Participants

PBMF hosts a Welcome Party, which is a semi-formal dinner with entertainment for all participants. A formal ballroom is used, with students receiving random seating assignments, allowing them to meet students from other schools and nations. The evening fills out with staff introductions and Hawaiian music and dance.

A Festival Luau is also held for all participants at the end of the festival and includes a buffet lunch, hula contest, and Polynesian Review.

Festival Directors' Reception

A Festival Directors' Reception will be held on Saturday, March 19, 2011. Directors, faculty, and staff will have an opportunity to meet and talk with educators from the various regions represented in an informal setting. These social gatherings have become quite popular with visiting and local music educators, and we encourage the group directors to invite three (3) additional representatives from their group to attend and participate. Representatives must be over the age of 21.

Chaperones

PBMF suggests all youth groups in attendance have approximately one (1) adult chaperone for every eight (8) students. In some cases this student/chaperone ratio can be amended depending upon the student group policy of your chosen hotel. Please contact your *World Projects* representative for more information. Chaperones must stay in the same hotel as students, taking one of the participant packages offered as part of the group tour. Please check your school's chaperone requirements as well.

Air Travel Arrangements

Air travel to and from the Pacific Basin Music Festival can be arranged by World Projects at competitive market rates. For round-trip air travel from your area to Honolulu, contact Keith Bishop at the World Projects Headquarters office toll free (800) 922-3976 or from out of the US +1 707 556 5885 or e-mail him at:

keith-bishop@world-projects.com.

Added Value

Each participant will receive a DVD video of your entire trip. Create A Video will provide a digital camera for each group to use prior to, during, and on the trip home. These digital images will be used to create a DVD slide presentation using your festival music as background. This is a unique way for each member of the group to have a lasting memento of their trip. Sample presentations can be viewed at www.createavideo.com/schooltrip.

Additional Information

- ◆ Please note that walking to and from festival venues may be required.
- ◆ The scheduled Faculty for 2011 will be announced in September of 2010 (subject to change).

Director's Information Packet

A Director's Information Packet will be mailed to all accepted and deposited groups. This packet will contain more detailed information regarding the Festival, as well as forms to be completed by each group and returned to *World Projects* headquarters.

Festival Application Procedure

Send a completed application form (*attached*) and a recent CD, DVD, audio or videotape that is representative of your performance level to: Pacific Basin Music Festival, 601 First Street, Suite 200, Benicia, CA 94510 USA. The recording should be indicative of your group's performance level and festival repertoire.

The deadline for application for the 2011 festival is November 1, 2010. Each choir accepted for participation will be required to submit a US \$2,000.00 non-refundable deposit in order to hold space in the festival (which will be applied to the final invoice). Choirs will be admitted based on their audition submission and on a space available basis until the festival is full. A choir may be accepted into the festival after the application deadline with the approval of the Festival Director.

Festival Participation Agreement

Once the group deposit has been received, World Projects will require the group leader to sign a Group Performance Agreement which outlines the terms and conditions including tour costs, inclusions/exclusions and Payment and Cancellation Schedule.

Ground Package Inclusions

- ◆ Five nights OR seven nights hotel accommodation (includes taxes and portage)
- ◆ One gratis ground package for every 20 paid participants based on double occupancy rate (includes hotel)
- ◆ Lei greeting and airport transfers for group and equipment
- ◆ All required group coach transportation during festival to Ala Moana, Pearl Harbor, Hawaii Theatre and Central Union Church (TBC)
- ◆ Festival Welcome Party (includes dinner) and Festival Directors' Reception
- ◆ Festival Farewell Luau (includes buffet lunch)
- ◆ Breakfast each morning
- ◆ One (1) workshop per group
- ◆ One (1) rehearsal per group
- ◆ Festival performance and written adjudication comments
- ◆ PBMF Outdoor Series Performance at the Ala Moana Shopping Center "Center Stage" (or similar)
- ◆ Festival Select Choir participation
- ◆ Visit to Pearl Harbor and USS Arizona Memorial
- ◆ Festival performance CD (one per group)
- ◆ Official Festival souvenir program
- ◆ Official Festival t-shirt
- ◆ Festival award plaque
- ◆ Certificate of Participation for each performing artist
- ◆ Festival registration fees
- ◆ Access to all Festival concerts & events
- ◆ Official Festival photographer at adjudicated performance venue and luau (prints not included)
- ◆ Equipment as per PBMF Director's Packet
- ◆ DVD slide show of the trip for every participant
- ◆ Director's Packet
- ◆ Artist Pass Lanyard

Ground Package Exclusions

- ◆ Airfare and related taxes/surcharges
- ◆ Lunches and dinners not mentioned in Inclusions (Opening Party, Closing Luau are included)
- ◆ Rollaway beds
- ◆ Items of a personal nature (laundry, room service, internet connection fees, etc.)
- ◆ Additional sightseeing excursions (*World Projects can arrange a variety of Hawaii sightseeing activities which are presented as Optional Sightseeing Activities in the Director's Packet*)

Payment and Cancellation Schedule

Date	Payment / Type	Cancellation / Refund
Upon Acceptance	US \$2,000 per group deposit	Non-refundable
November 1, 2010	US \$350 per person	50% refundable to December 15, 2010
February 1, 2011	Balance in Full	50% refundable to February 15, 2011

Notes Regarding Accommodations

All fees are in U.S. dollars. Exact charges vary depending on hotel selected. The above costs do not include rollaway beds (US \$30-\$40 per night + tax). Groups will be booked into their preferred hotel on a “first come — first served” basis. Information regarding each of these hotels is available through your nearest *World Projects* office. We will be happy to discuss your hotel options with you, based on your particular needs, and give our recommendations in order to reserve space for your group.

All hotels require youth groups to a) prepay a damage deposit (which is refundable if no damages are incurred), b) submit a “Letter of Responsibility” on organization letterhead, and/or c) submit a credit card for imprint in the event of any damages. Should your chosen hotel require a damage deposit, **the deposit will be due at the time of the final group payment (1 February 2011). If due a refund, this amount will be returned to each group approximately four (4) weeks after the festival.**

World Projects cannot guarantee that your hotel can “block” your group into one specific floor or area due to the capacity of the hotel at Festival time. However, the hotels will make every effort to keep your group’s rooms in close proximity to one another.

All hotel accommodations are based on existing hotel bedding. For quads, there are two (2) double beds and four people per room; for triples, there are two (2) double beds and three people per room; for doubles, there are two (2) double beds or one (1) queen bed and two people per room; for singles, there are two (2) double beds or one (1) queen bed and one person per room. One rollaway bed per room is allowed at extra cost (US \$30-\$40 + tax per bed per night). Please note that hotel policy only allows 4 people to stay in each room.

Hotel Analysis

Ohana Waikiki West Hotel (2-star): Located two blocks from Waikiki Beach, three blocks from the Pacific Beach Hotel and one block from the International Marketplace.

Rooms are equipped with “kitchenettes” (hot plate or microwave, mini-refrigerator, and utensils).

Group Damage Deposit Policy (Subject to change): Hotel requires a “Letter of Responsibility” from group organization along with a valid credit card imprint (note: credit card not charged unless damages occur).

Waikiki Resort Hotel (3-star): Adjacent to Pacific Beach Hotel and one block from Waikiki Beach. Rooms are standard with mini-refrigerator and safe.

Group Damage Deposit Policy (Subject to change): “Good Faith” letter from group organization promising that group will pay for any room damages incurred.

Ohana East Hotel (3-star): Located two blocks from Waikiki Beach, two blocks from the Pacific Beach Hotel and two blocks from the International Marketplace.

Group Damage Deposit Policy (Subject to change): Hotel requires a “Letter of Responsibility” from group organization along with a valid credit card imprint (note: credit card not charged unless damages occur).

Pacific Beach Hotel (3.5-star) – The Official Hotel of PBMF: Across from Waikiki Beach, the hotel serves as the primary venue for most PBMF activities.

Group Damage Deposit Policy (Subject to change): US \$200 per room (note: this deposit payment may be in the form of an organization check or credit card and will not be deposited or charged by hotel unless damages occur).

FESTIVAL FREQUENTLY ASKED QUESTIONS

1. Do chaperones / adults / non-performing travelers have to pay the same package costs as the performers?

Yes. In order to keep the cost of participating in the Festival affordable for as many students as possible, World Projects presents a blanket package cost. Creating a reduced rate for non-performers would increase the performer costs significantly, and thus we maintain one cost for all travelers.

2. Does the package cost cover any type of Travel or Medical Insurance?

No. Travel and Medical Insurance is not included as there are specific and varied types of coverage available depending on your individual needs. Travel, Medical, and Trip Cancellation insurance can be arranged through World Projects upon request at an additional cost.

3. Does World Projects have any type of Liability Insurance?

Yes. According to California State Law, World Projects is required to hold \$3 million Travel Agents Professional Liability Insurance Coverage. This is not a form of Travel, Medical, or Trip Cancellation Insurance for groups—rather a form of insurance coverage for World Projects.

Upon request, World Projects can list your school and/or school district as a ‘co-insured’. A customized Certificate of Liability will then be produced showing your school and/or school district as a co-insured for the event you are attending. For further detailed information, World Projects can provide a copy of the Liability Policy upon request.

4. In the event that my child cannot attend the Festival after making payments, what is the refund policy?

World Projects has put in place a generous cancellation schedule, which can be found in this Prospectus. This schedule outlines the percentage of payments made that are refundable and until when. All cancellation charges (if any apply) will be represented on your group’s final invoice.

When cancellations occur, our first recommendation is that a replacement is found to take the cancelled traveler’s spot on the tour. That way, all finances can be dealt with internally at the school or organization, and cancellation fees need not be assessed (unless air transportation is involved).

World Projects does, however, acknowledge that unforeseen circumstances do arise and will be reviewed on a case-by-case basis. In the event of a death in the family or illness/injury that prevents travel (as examples), World Projects will review what monies can be recovered from outside vendors (such as airlines, hotels, etc.). These vendors establish their own cancellation schedules, which World Projects must adhere to.

5. When do I need to submit rooming lists, repertoire, and other information about my group?

About six months out from the event (or after this date for late applicants), World Projects will send you a Director's Packet. Included in this packet are a number of forms we have created to make submitting necessary information to us as simple as possible. World Projects customizes each Director's Packet so only the forms that apply to your group are included. We ask that these forms be returned to us approximately 3-4 months out of an event, allowing us enough time to make all of the arrangements for your festival experience. We do understand that changes may occur after information is submitted and will try to accommodate changes when possible.

6. I want all of my students to be in quad rooms; however, after putting together my rooming list I've discovered I have an odd number of students left over. Can they stay in a triple, double, or single room at the quad rate?

World Projects has created four different packages based on the different rooming configurations. Unfortunately, in this type of forced rooming situation, World Projects cannot make concessions for the package rates. What we recommend is that the additional cost of these packages compared to the quad rate be prorated among the paying travelers. This generally works out to be a very small additional cost per person.

7. Can World Projects organize any sightseeing activities or meals for my group outside of the Festival Package? Can we arrange sightseeing ourselves?

Yes. World Projects will supply you with an 'Optional Sightseeing Activities' form in the Director's Packet. This form will include a number of popular sightseeing activities in the Festival city and the additional costs. Once you have selected the activities you wish to enjoy, World Projects will arrange these tours for your group around your Festival commitments.

Should you wish to partake in a sightseeing activity not listed on the form, World Projects will research costs and present these to you. All additional costs for optional sightseeing activities will be represented on your group's final invoice.

You are also welcome to make your own sightseeing arrangements for your group or for individual travelers. However, World Projects does request that we are informed of the date and times of your group sightseeing activities to ensure that there are no conflicts with your Festival commitments.

8. Can World Projects arrange air travel for my group? If so, how does this work?

World Projects will be able to provide competitive quotes and prompt service to all of our clients requesting air costs.

World Projects will make all of the initial inquiries on your behalf, and should you decide to take any of the quotes offered, we will act as your representative on all aspects of your air transportation including the names list, equipment list, etc. World Projects will invoice you separately for airfare related costs.

9. Can you explain the invoicing process to me in further detail?

Upon acceptance, each performing group will be invoiced for the \$2,000 nonrefundable deposit which secures your position in the Festival.

The next payment request is a per person progress payment. World Projects will invoice you for the total number of travelers indicated in recent correspondence or on your Festival application form. This total number of travelers invoiced will include any applicable gratis travelers. The value amount of a gratis package (the cost of a double occupancy package) will be credited to your final invoice.

The Final Invoice will show a detailed breakdown of all costs associated with your tour (including the rooming summary, any optional sightseeing or meals, and any applicable cancellation charges). Your final balance due will be based on these calculations. Any additions to your tour after the final invoice has been created and sent will be billed on a Supplemental Invoice.

10. Can World Projects organize additional equipment for our group to use during the Festival (i.e. string bass, additional percussion, etc.)?

Depending on the availability of the instrument(s) requested, World Projects can arrange the rental of extra instruments not provided by the Festival at an additional cost. In some cases, there may be other ensembles that are also in need of the same additional equipment. In this instance, World Projects can often split the additional equipment cost between ensembles. Please contact the Festival Operations Manager with your requests as early as possible.

11. At what point can we expect a personalized itinerary for our time during the Festival?

The itinerary shown in the Prospectus acts as a guide for what you can expect during the event. After your progress payment has been received, World Projects will send you a draft individual schedule, which will give you a better idea of your group's movements during the event.

From this point on, the Festival Operations Manager will continue to update your group's schedule with new information such as exact performance, workshop, and meal times, venues, etc. Before you depart for the Festival, you will have a FINAL itinerary for your time during the event.

PACIFIC BASIN MUSIC FESTIVAL - CHORAL

Official Application Form

NOTE: Applications close on November 1, 2010 or when the Festival is full.

Please circle the type of ensemble applying to participate
(a separate application form must be submitted for each ensemble applying):

Concert Choir Chamber Choir Women's Choir Men's Choir Other

Please indicate the year your group wishes to participate: 2011 2012

Name of School/Organization: _____

Name of Ensemble: _____

Name of Director (with title): _____

Address of Ensemble: _____ City: _____

State or Province: _____ Postal Code: _____ Country: _____

Telephone: _____ Facsimile: _____ E-mail: _____

Number of Participants

Performers in Ensemble: _____

Directors: _____

Staff: _____

Administrators: _____

Chaperones: _____

Total Number of Participants: _____

Hotel Preference: 1st _____ 2nd _____ 3rd _____

Previous festivals and tours attended by group: _____

Recent repertoire: _____

Please send the following items with this application:

1. Recent CD, DVD, audio or videotape (VHS-NTSC format)

2. Any copies of previous adjudication or judging forms (if available) OR a current repertoire list.

If accepted, a non-refundable deposit of US \$2,000.00 per group made payable to WORLD PROJECTS is required to hold space in the Festival.

Signatures: _____

Group Director

Date: _____

School Principal or Group Administrator

Date: _____

World Projects



Explore The World With Music

Please return this form and all materials to: Pacific Basin Music Festival
World Projects Corporation
601 First Street
Suite 201
Benicia, CA 94510 USA